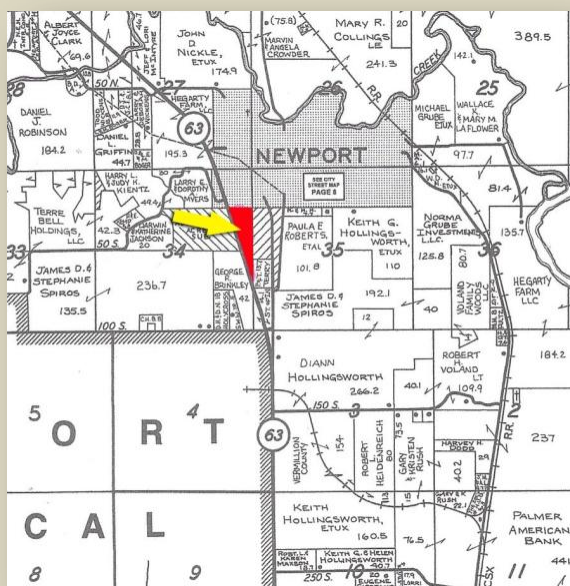


LAND FOR SALE

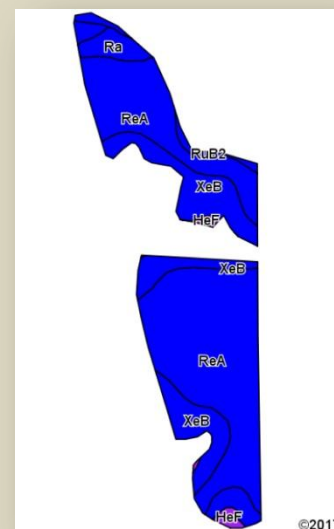
+/- 33.57 acres

Vermillion Twp., Vermillion Co., Indiana

Directions: State Road 63 to Newport exit. Go east to Old State Road 63, south to Hill Top Drive, then west to property.



- +/- 33.57 total acres
- +/- 23.05 tillable acres
- 2.0 acres pond
- 2.5 acres in CRP - \$253/acre
- Taxes: \$1,051.12
- Price: \$4,900 per acre



Area Symbol: IN165, Soil Area Version: 17

Code	Soil Description	Acres	Percent of field	Non-Irr Class Legend	Non-Irr Class *c	Corn	Soybeans	Winter wheat	Grass legume hay	Pasture	Oats	Grass legume pasture
ReA	Reesville silt loam, 0 to 2 percent slopes	15.32	66.5%		Ilw	159	52	72	6	10		
XeB	Xenia silt loam, Bloomington Ridged Plain, 2 to 5 percent slopes	6.01	26.1%		Ile	144	47	56	5	72	8	
Ra	Ragsdale silt loam	0.85	3.7%		Ilw	190	54	76	6	13		
RuB2	Russell silt loam, Bloomington Ridged Plain, 2 to 5 percent slopes, eroded	0.50	2.2%		Ile	136	42	53	4	68	6	
HeF	Hennepin loam, 25 to 50 percent slopes	0.37	1.6%		Vlle							
Weighted Average						153.2	49.7	66.4	5.6	7.1	20.2	2.2



Randy Hicks, Listing Agent
 The Warren Agency
 Covington, IN 47932 • randy@thewarrenagency.com
 Office: 765-793-2147 • Cell: 765-230-8105
 www.thewarrenagency.com

